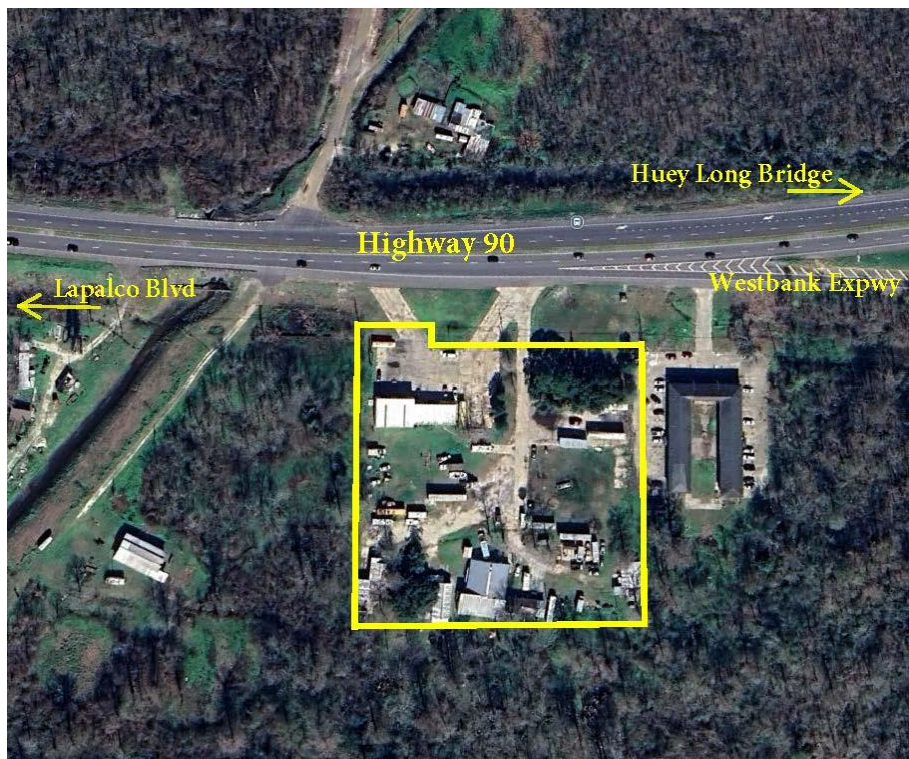




# AVAILABLE



## Commercial Property for Sale



**Location:** 2125 Highway 90, Avondale, LA 70094  
(Two miles from the Huey P Long Bridge)

**Asking Price:** \$899,000.00

**Description:** The subject property is a 3.62-acre site that is cleared and compacted with various buildings located on the site including a 4,000 s/f warehouse close to the highway and another 4,000 s/f warehouse in the rear of the property. There is a mixture of other uses on the property which include some mobile homes, a couple of small houses, a storage shed and some rented parking spaces. Buildings are serviced by 2 septic tanks. Property is currently collecting approx. \$8,000/mo in rental income. Zoned U-1S which allows for a wide variety of uses from residential to commercial. Click [here](#) for more information on the zoning.

**JACK STUMPF  
& ASSOCIATES, INC.**

COMMERCIAL REAL ESTATE SERVICES

1700 Central Boulevard  
Harvey, Louisiana 70058  
(504) 366-6800  
[www.jackstumpf.com](http://www.jackstumpf.com)

**Listing Agent:**

Jon Cerruti  
(504) 366-6800  
[jon@jackstumpf.com](mailto:jon@jackstumpf.com)

October 16, 2024

The information presented herein has been furnished by the owner or obtained from sources we deem reliable. No warranties or representations, either expressed or implied are made as to the accuracy of the data provided, and same is subject to error, omission, change of price, and/or conditions of availability without notice.























